



# PolyVault Conversion Install Guide

This Installation guide will help you retrofit your 2015-2020 PolyVault into a 2021 or newer model Tahoe.

**\*\*\* ATTENTION \*\*\***

This process can take on average 2 to 4 hours to complete depending on your skillset and knowledge of tools. Some vaults may **NOT** be able to be converted. Contact us regarding this process and prior to ordering your retrofit/conversion kit.

# Installation Tools Required

**(NOT INCLUDED)**



# Installation Hardware

Below is a list of hardware for your installation.

**(INCLUDED)**

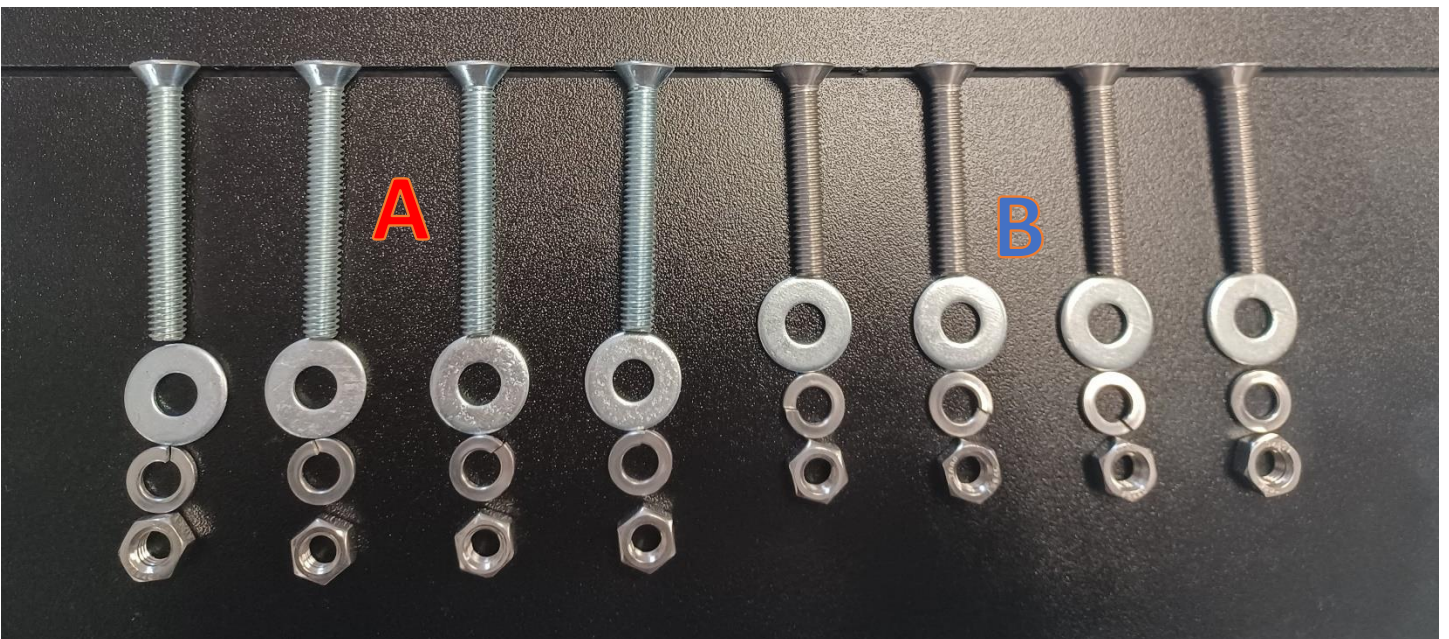
(7) 3/8"-16 x 1.5" Self-Threading I-Beam Bolts



(4) 5/16-18 x 2.5" Flat Head Bolts (Box)

(4) 5/16-18 x 2" Flat Head Bolts (Floor)

(8) 5/16 Flat Washers, (8) 5/16 Lock washers, (8) 5/16 Nuts





Step 1 – Remove any vinyl/carpet located in the rear cargo area of vehicle to expose metal floor. This may require cutting through the factory flooring, if not easily removable. **\*\* Use caution when cutting. \*\***

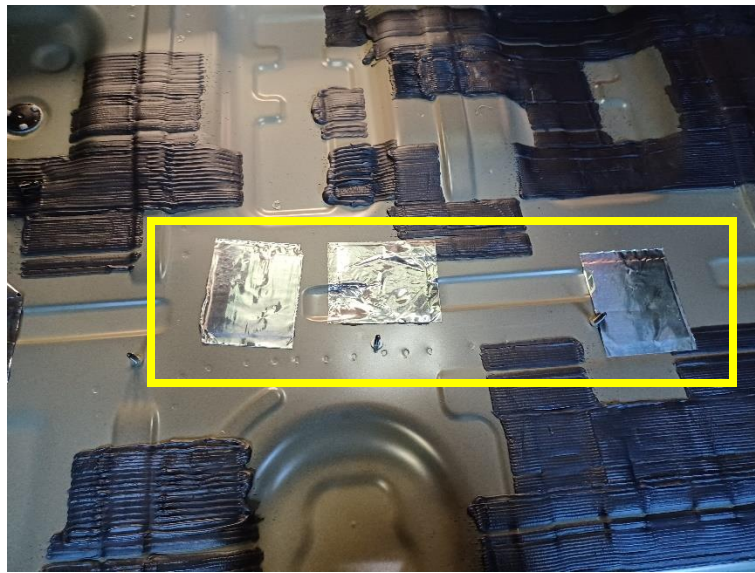


Step 2. Using box cutter or knife, carefully cut vinyl/carpet behind middle row seats to reveal mounting points. **\*\*\* Use extreme caution and ensure that there are no electrical components UNDER the carpet that can be damaged, before you cut. \*\*\***





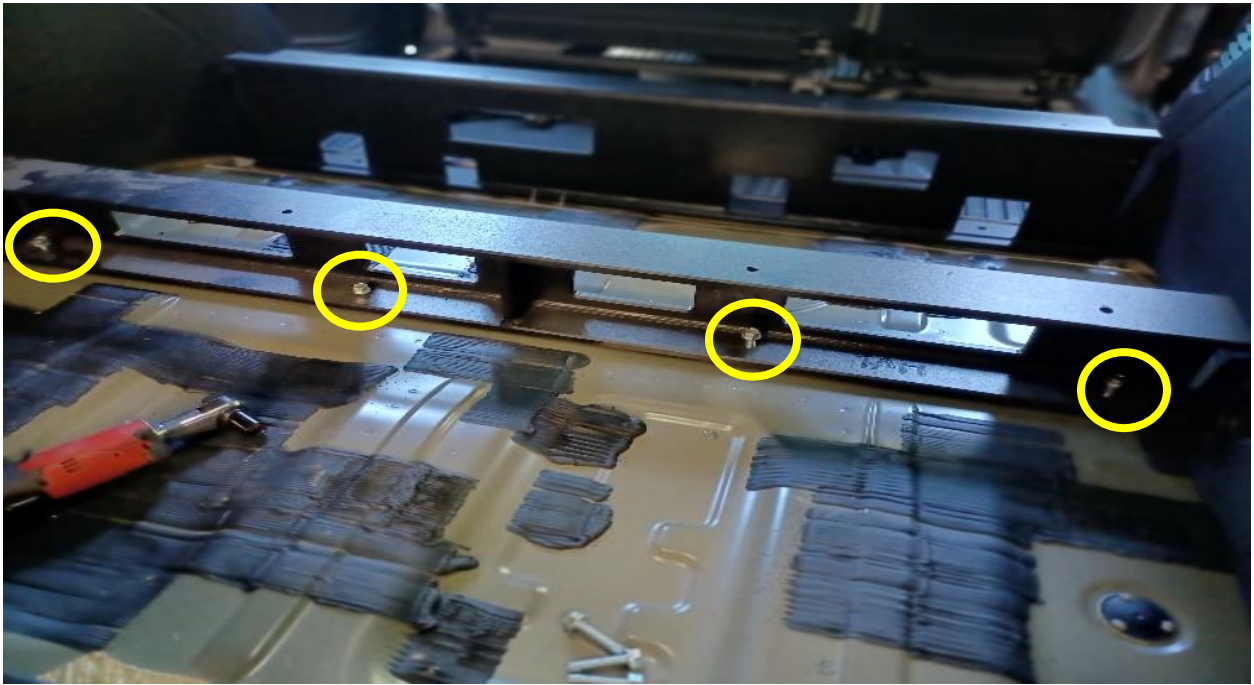
Step 3. Using 15mm Socket, remove factory bolt located on the driver side rear portion of vehicle. You will need to use this factory hole for one of your I-Beams. Remove **ALL** aluminum adhesive pad covers, to reveal factory bolt holes



Step 4 – Position and loosely bolt down front and rear I-beams, using large self-tapping floor bolts and the 9/16 socket. Do NOT tighten bolts all the way. You will use 4 bolts for the shorter I-beam (**This I-Beam will be positioned midway between the rear seats and tailgate**), and 3 bolts for the taller I-beam (**This I-Beam will be position closer to the middle row seats**). \*\*\* If you have a rear partition/Cage, go ahead, and tighten all 3 bolts on the tall I-Beam. \*\*\*







\*\*\*Optional.\*\*\*

If you purchased an electronics tray, follow the following steps for installation. If not, skip to step 5. **DO NOT INSTALL UNIT** until you have installed Electronics Tray.



(4) #12- 1 1/2"  
Self-tapping screws



\*\*\* Hardware for your Electronics Tray \*\*\*

E-Tray 1 - Place Electronics Tray into rear cargo area of vehicle. Between the small I-Beam and Tailgate.

Using self-tappers and 5/16 or 8mm driver bit, carefully screw tray down using provided holes. \*\*\* Always ensure there are no electrical components, a.c. lines, fuel lines or other critical equipment under this mounting area that may be damaged before you use self-tappers. \*\*\*



E-Tray 2 – Ensure any mounted equipment does not exceed 3” in height, to avoid damage when sliding unit in.



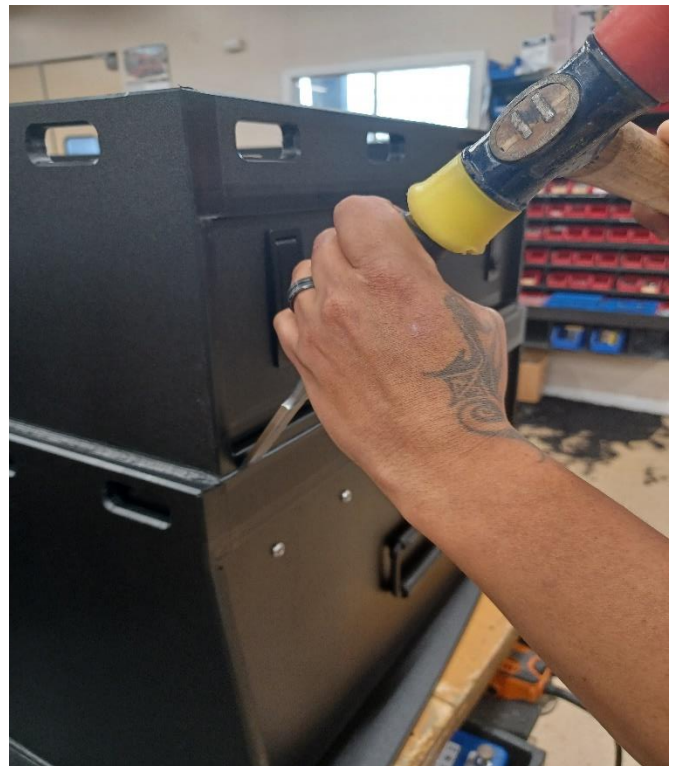
\*\*\*If your unit contains upper drawers, please follow the next steps, if not, proceed to step 6. \*\*\*

**ATTENTION!!!** All upper drawers must be **CHISELED OFF** prior to beginning retrofit. If your unit contains side by side upper drawers, only 1 will be able to fit once the process is complete. If your unit contains a full width upper drawer, this drawer will **NOT** be able to be reinstalled due to "D" pillars.



Step 5 – Using a Chisel of your choice, place chisel against the weld and strike down with Hammer. Make sure you repeat the process all the way around the drawer until 3rd drawer can break loose from weld and be taken off.

\*\*\* Using Excessive striking force with hammer, may cause stress fractures or Cracks on surrounding areas of plastic. There will be scarring of the plastic, left behind. \*\*\*



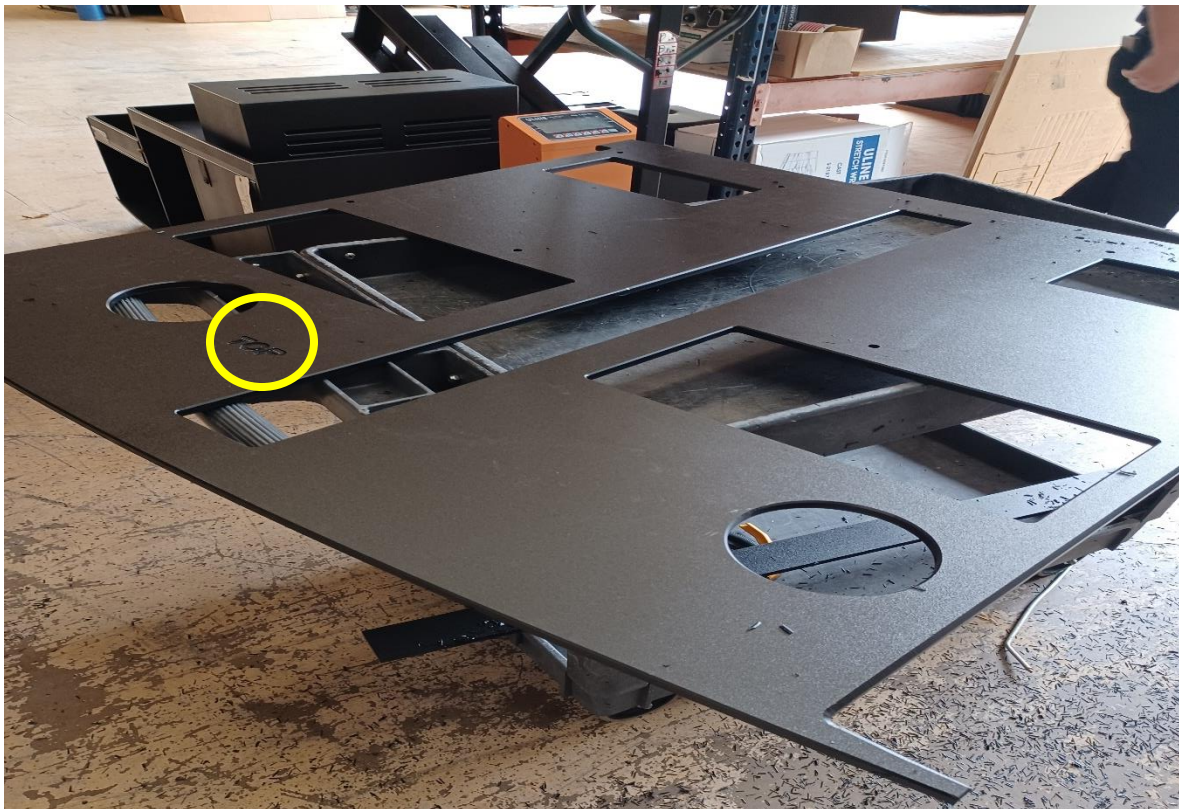


Step 6 – Remove all drawers from unit and Turn Vault upside down.



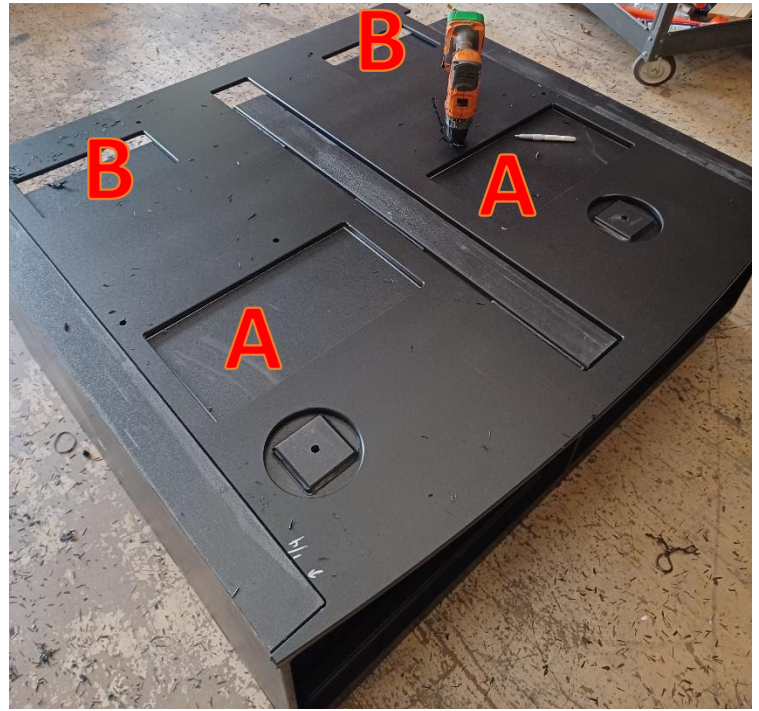
Step 7A – Grab the Conversion floor included in your retrofit kit and use it as a template by placing it directly on top of the underside of your unit.

\*\*\* Note: the side of the floor engraved "TOP" will go directly facing the bottom of the unit(underside). \*\*\*

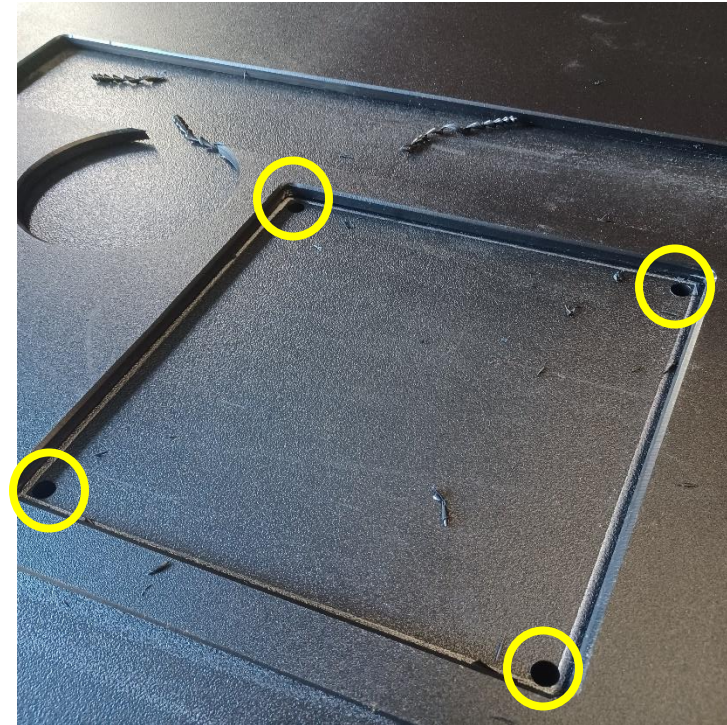




Step 7B- Once the floor is positioned properly as shown on image below, proceed to marking the rectangular openings with your silver sharpie. \*\*\* If your unit is an older Setina Model (37" Deep), you will only need to cut the 2 Biggest openings marked "A". If you have a full depth unit proceed to cut out "B" openings as well. \*\*\*

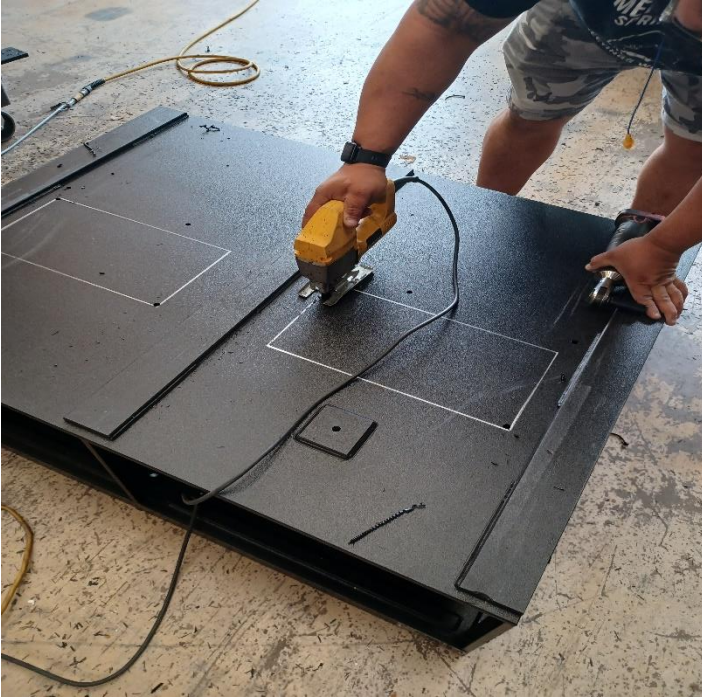


Step 8- While template is in place, proceed to drilling all holes on template into your box using a 3/8<sup>th</sup> drill bit. Drill 4 holes, 1 in each corner of rectangular openings. \*\*\* Tip- To keep the floor from moving while you drill holes, drop a bolt into every hole you drill. After all holes are drilled, remove bolts. \*\*\*

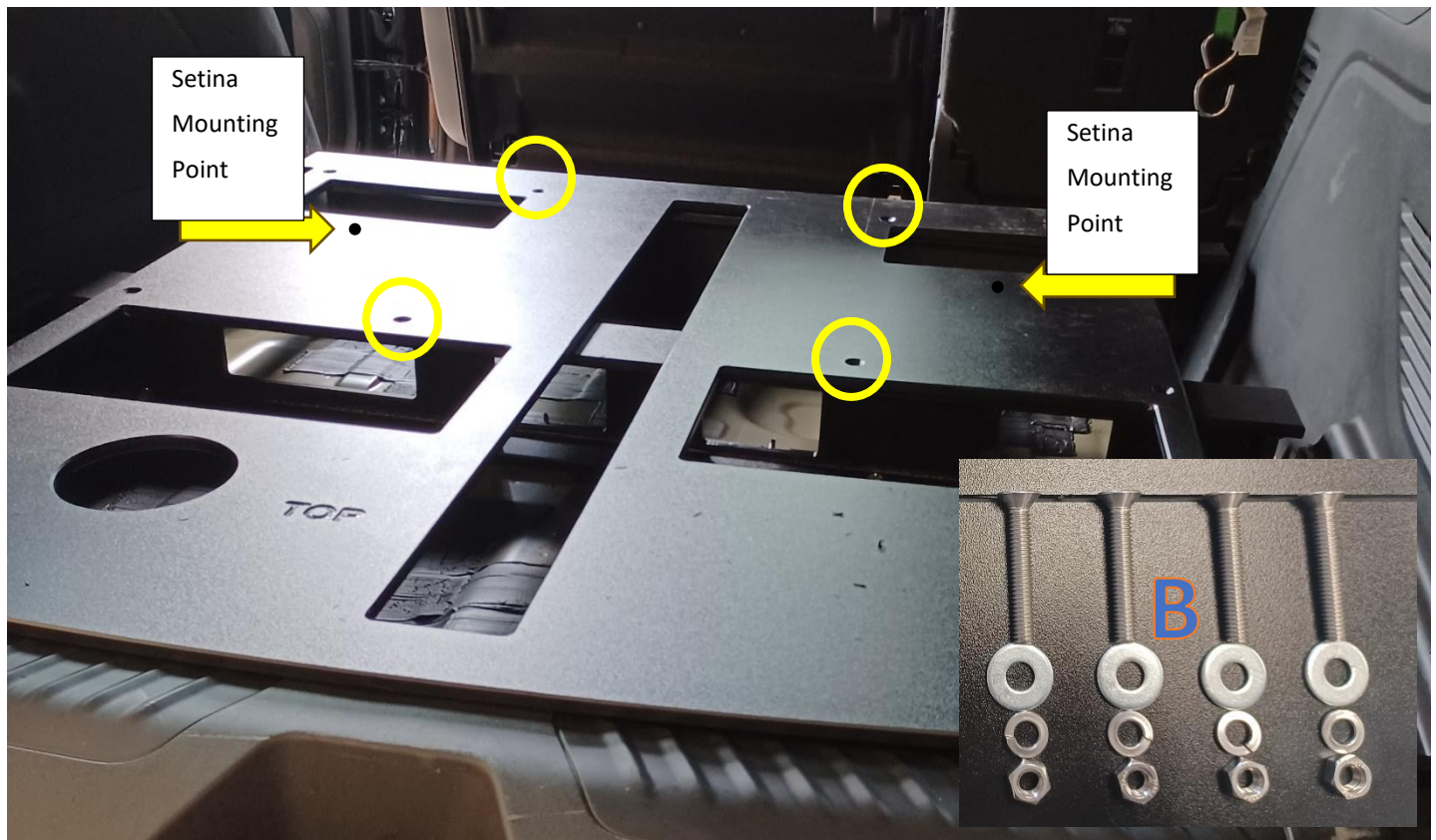




Step 9- Remove template and proceed to cutout rectangular openings marked, using Jigsaw. Once complete, remove all scrap and shavings within box. Flip Box upright and set aside.

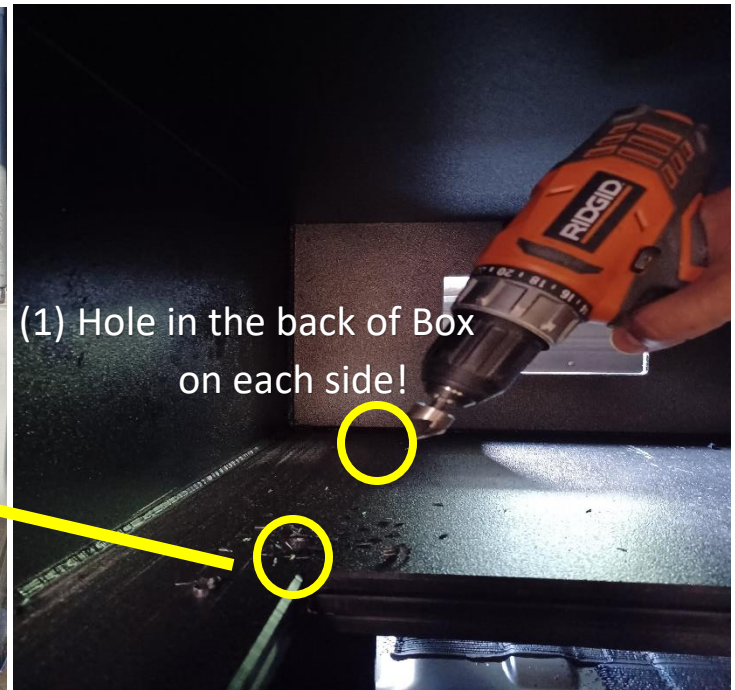


Step 10- Place retrofit floor into Vehicle with the word "TOP" facing up. Align holes with holes on I-beams and place (4) 5/16 x 2" Flat head bolts into the 4 inner holes on floor and through I-Beams. Place washers, lock washers and nuts and tighten all 4 bolts using your #3 Philips screwdriver and 1/2" open end wrench or deep socket.

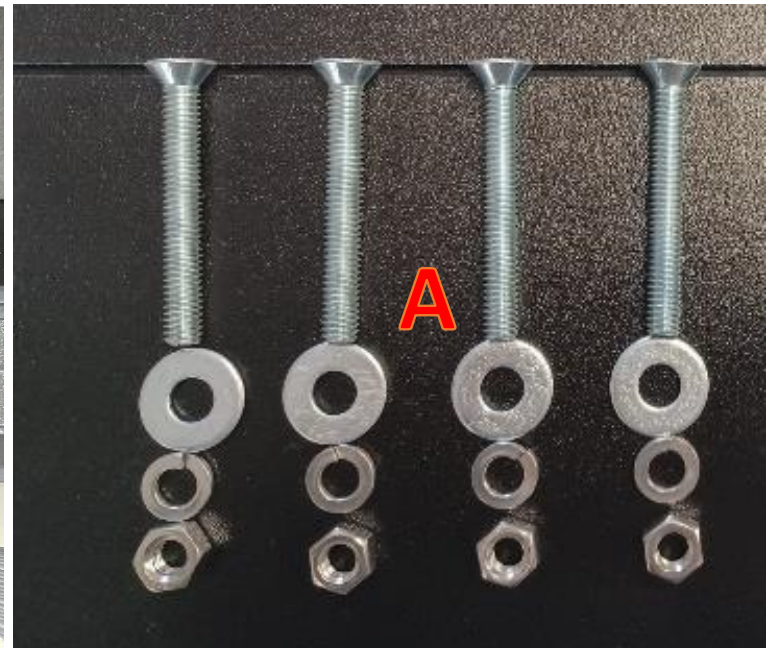
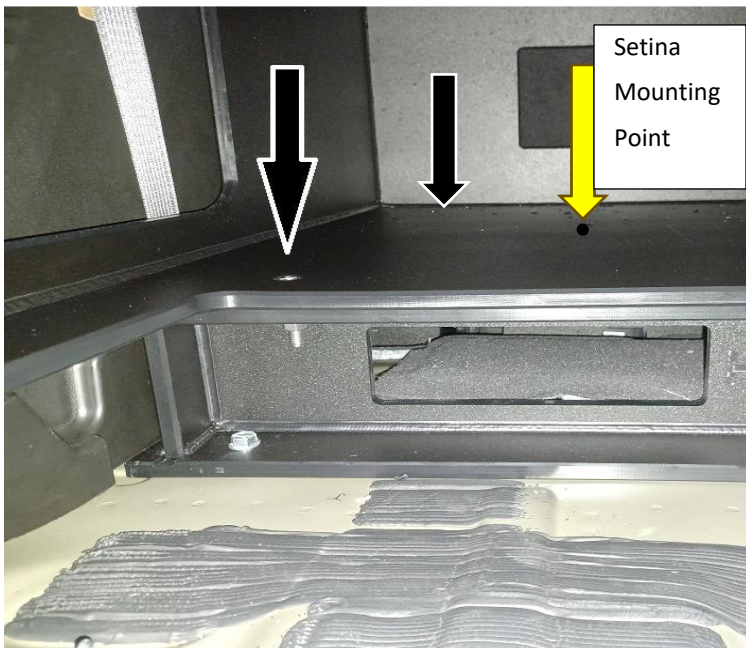




Step 11- Slide unit into vehicle and make sure it is sitting level. \*\*\* 2015-2020 units are 48.5" wide!!! The units WILL rub against "D" pillars as you are sliding it into vehicle causing PERMANENT scuffs or scrapes on plastic molding. \*\*\* Using your 5/8" Counter Sink Bit, counter sink all 4 outer holes inside the box.



Step 12- Align all holes and place (4) 5/16 x 2.5" Flat head bolts into the 4 outer holes on box and through floor and I-Beams. Place washers, lock washers and nuts and tighten all 4 bolts using your #3 Philips screwdriver and 1/2" open end wrench or deep socket. \*\*\* Note, I you have a Setina style Vault, your rear mounting point is indicated by yellow arrow. One on each side. \*\*\*



Step 13 – Completely tighten ALL I-Beam floor bolts using the 9/16 socket.



Step 14 – Insert Drawers on lower unit in corresponding opening and close about halfway. Place original bolts in holes directly above the drawer. Using your 7/16 open end wrench and Philips screwdriver, tighten bolts down. Installation of these bolts are required for SAFETY and WARRANTY Purposes. If you have multiple drawers, start at the bottom, and work your way up. You should already have 2 bolts and 2 locknuts per drawer.



(2) 1/4-20 x 3/4" Flat bolts

(2) 1/4-20 Locknuts

(2 bolts and 2 nuts PER DRAWER)

This completes the **BASIC** installation on most units. However, additional steps may be required to finalize the entire installation process. See the steps below to ensure that you have completed your installation in its entirety.

\*\*\* If you chisel off upper drawers, here is what you will need to reinstall it to the top of your unit. **Full width upper drawer and Side by Side drawers will NOT work in your new vehicle! \*\*\***



(Not included in a standard Retrofit Kit. Please let us know at the time of placing your order, so that we can include this as well. Extra charges will apply.)

(2) Aluminum Angles

(16) #10 x 1/2" Pan Head screws

**(NOT INCLUDED)**

Drill, Philip Driver, 1/8" Drill Bit

3<sup>rd</sup> Drawer-1 – Place single 3<sup>rd</sup> drawer, 2" inward from either side of vault.



3<sup>rd</sup> Drawer-2 – Using aluminum angles and hardware, screw 3<sup>rd</sup> drawer down to unit.

\*\*\* Predrill holes prior to using screws. \*\*\*



**Thank you for choosing Plastix Plus.** We appreciate your business and look forward to being of service in the future. If you have any questions, concerns, or suggestions, please don't hesitate to contact us at: 281-469-3451 or email us at [info@pptexas.com](mailto:info@pptexas.com)