



# 2021+ Tahoe Installation Guide

(PolyVaults, Cargo floors, Command Units, Cargo Units)

Before you begin, gather the tools pictured below for your installation. These tools are NOT provided in your install kit. \*\*\* Power tools are highly recommended but not necessary. \*\*\*



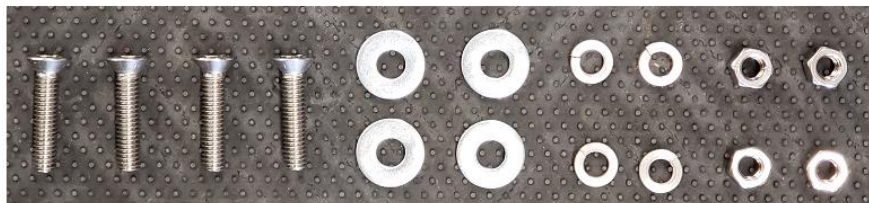
# Installation Hardware

Below is the standard installation hardware kit. **Some units will require additional hardware.**

**\*\*\* If you have purchased a unit that contains drawers, you will have the following Hardware in**



(7) 3/8"-16 x 1.5" Self Threading bolts.



(4) 5/16 -18 x 2" Flat bolts  
(4) 5/16 Flat washers  
(4) 5/16 Lock washers  
(4) 5/16 Nuts



(4) 1/4-20 x 1.25" Flat bolts

**your kit.**



(2) 1/4-20 x 3/4" Flat bolts  
(2) 1/4-20 Locknuts

(2 bolts and 2 nuts PER DRAWER)



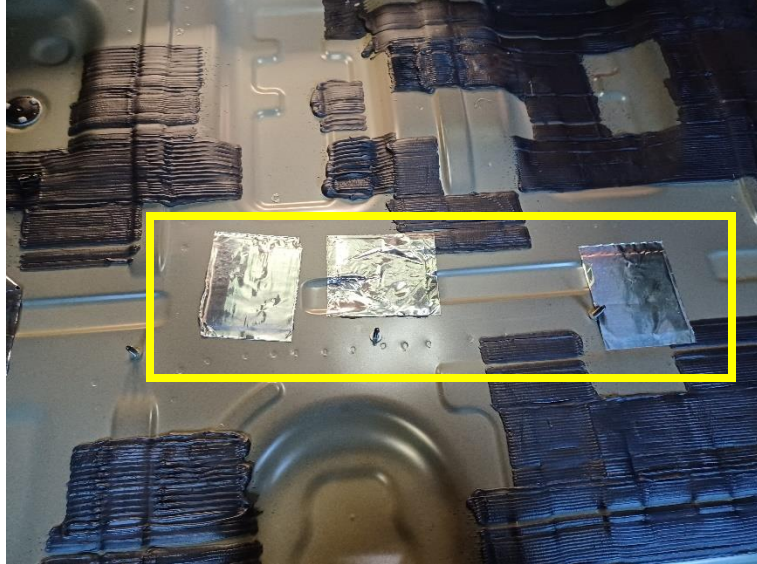
Step 1 – Remove any vinyl/carpet located in the rear cargo area of vehicle to expose metal floor. This may require cutting through the factory flooring, if not easily removable. **\*\* Use caution when cutting. \*\***



Step 2. Using box cutter or knife, carefully cut vinyl/carpet behind middle row seats to reveal mounting points. **\*\*\* Use extreme caution and ensure that there are no electrical components UNDER the carpet that can be damaged, before you cut. \*\*\***



Step 3. Using 15mm Socket, remove factory bolt located on the driver side rear portion of vehicle. You will need to use this factory hole for one of your I-Beams. Remove **ALL** aluminum adhesive pad covers, to reveal factory bolt holes

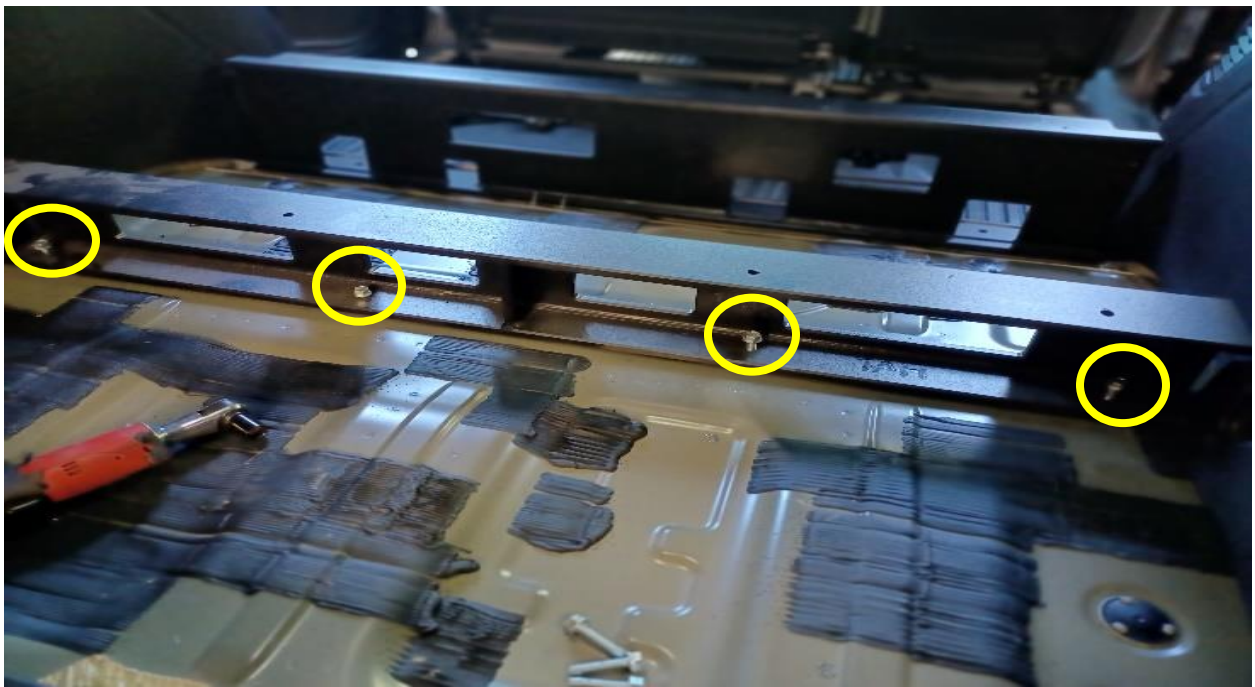


Step 4 -A. – Position and loosely bolt down front and rear I-beams, using large self-tapping floor bolts and the 9/16 socket. Do NOT tighten bolts all the way. You will use 4 bolts for the shorter I-beam (**This I-Beam will be positioned midway between the rear seats and tailgate**), and 3 bolts for the taller I-beam (**This I-Beam will be position closer to the middle row seats**). **\*\*\* If you have a rear partition/Cage, go ahead and tighten all 3 bolts on the tall I-Beam. \*\*\***



(7) 3/8\"-16 x 1.5\" Self Threading bolts.





\*\*\*Optional.\*\*\*

If you purchased an electronics tray, follow the following step for installation. If not, skip to step 5.  
**DO NOT INSTALL UNIT** until you have installed Electronics Tray.

\*\*\* Hardware for your Electronics Tray \*\*\*



(4) #12- 1 1/2"  
Self-tapping screws



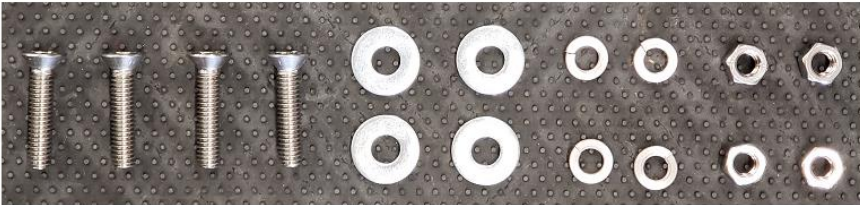
Step 4-B. - Place Electronics Tray into rear cargo area of vehicle. Between small I-Beam and Tailgate. Using self-tappers and 5/16 or 8mm driver bit , carefully screw tray down using provided holes. \*\*\* Always ensure there are no electrical components, a.c. lines, fuel lines or other critical equipment under this mounting area that may be damaged, before you use self-tappers. \*\*\*



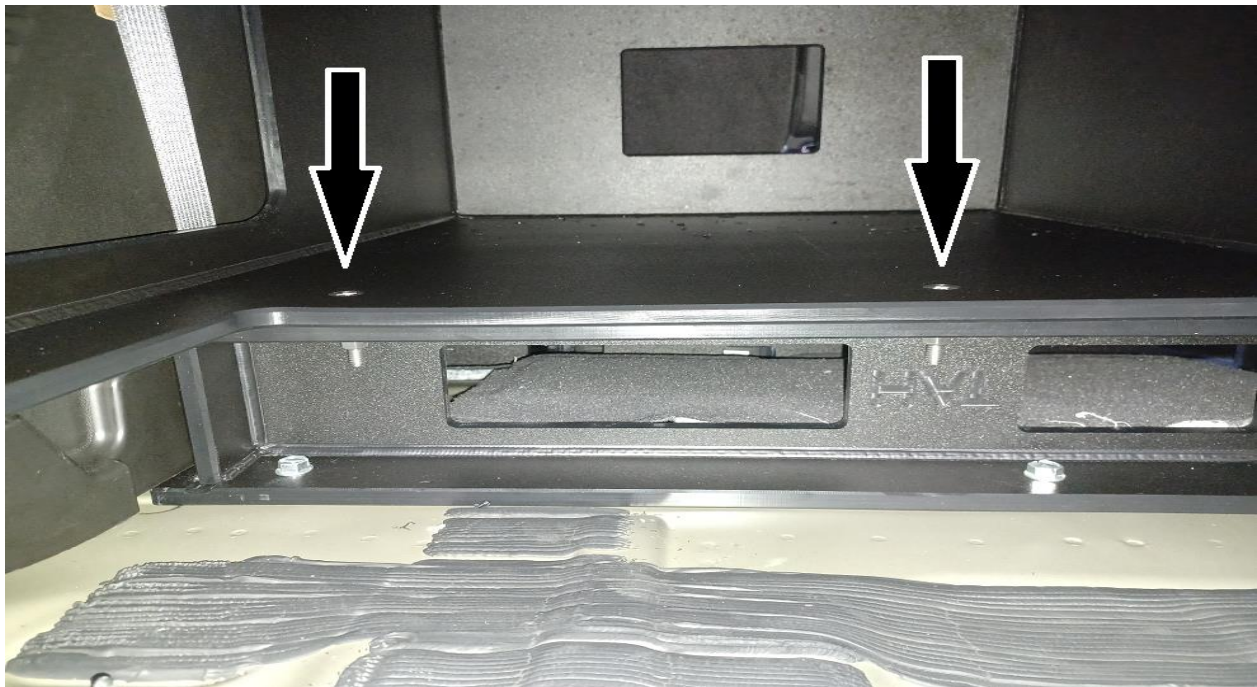
Step 4-C – Ensure any mounted equipment does not exceed 3” in height, to avoid damage when sliding unit in.



Step 5 – Slide unit into position over I-beams. \*\*\* If your unit contains drawers, remove all drawers before sliding unit into place. NOTE, drawers with slides, DO NOT COME OUT \*\*\* Align bolt holes in unit with holes on small I-beam by using the Philips screwdriver as a guide. Loosely install small I-beam bolts shown below. Do NOT tighten bolts all the way. This will help you locate the large I-beam bolts in the rear of the unit.



- (4) 5/16 -18 x 2" Flat bolts
- (4) 5/16 Flat washers
- (4) 5/16 Lock washers
- (4) 5/16 Nuts



Step 6 – Locate the rear unit holes and align them with the T-Nuts in the tall I-Beam (if you have a cage, you will have to access the holes thru the front openings of your unit) Insert Bolts shown below and proceed to tighten them down using your Philips screwdriver. \*\*\* A small drop of locktite is recommended for these bolts. \*\*\*



- (4) 1/4-20 x 1.25" Flat bolts





Step 7 – Completely tighten ALL I-Beam floor bolts using the 9/16 socket, followed by all 4 bolts shown in step 5 using your Philips screwdriver and 1/2 deep socket.

This completes the BASIC installation on most units. However, additional steps may be required to finalize the entire installation process. See the steps below to ensure that you have completed your installation in its entirety.

\*\*\* OPTIONAL \*\*\*

If you have purchased a unit that contains drawers, please follow the following instructions.

Step 8 – Insert Drawer in corresponding opening and close about halfway. Place provided bolts in holes directly above the drawer. Using your 7/16 open end wrench and Philips screwdriver, tighten bolts down. **Installation of these bolts are required for SAFETY and WARRANTY Purposes.** If you have multiple drawers, start at the bottom and work your way up. You will receive 2 bolts and 2 locknuts per drawer.

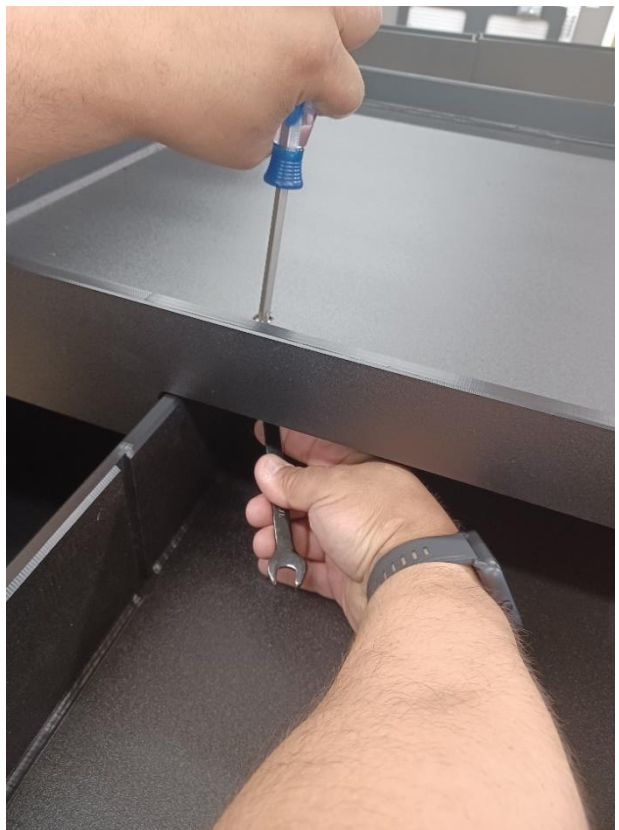


(2) 1/4-20 x 3/4" Flat bolts

(2) 1/4-20 Locknuts

(2 bolts and 2 nuts PER DRAWER)





Thank you for choosing Plastix Plus. We appreciate your business and look forward to being of service in the future.

If you have any questions, concerns or suggestions, please don't hesitate to contact us at:

281-469-3451 or email us at [info@pptexas.com](mailto:info@pptexas.com)